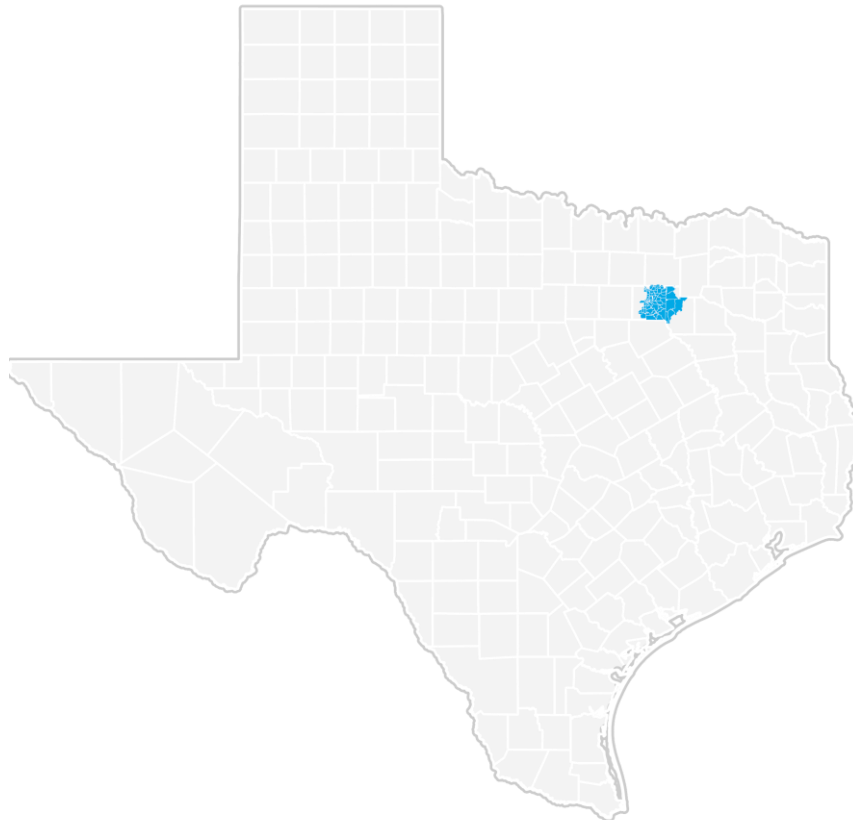


Economic Overview

Mesquite Workforce 30-Minute Commute



JOBS **e** **Q**

September 25, 2019

DEMOGRAPHIC PROFILE3
EMPLOYMENT TRENDS.....5
WAGE TRENDS5
COST OF LIVING INDEX6
INDUSTRY SNAPSHOT7
OCCUPATION SNAPSHOT.....9
INDUSTRY CLUSTERS.....11
EDUCATION LEVELS12
REGION DEFINITION13
FAQ15

Demographic Profile

The population in the Mesquite Workforce 30-Minute Commute* was 1,987,422 per American Community Survey data for 2013-2017.

The region has a civilian labor force of 1,025,103 with a participation rate of 67.8%. Of individuals 25 to 64 in the Mesquite Workforce 30-Minute Commute*, 30.9% have a bachelor's degree or higher which compares with 32.3% in the nation.

The median household income in the Mesquite Workforce 30-Minute Commute* is \$60,503 and the median house value is \$207,490.

Summary¹

	Percent			Value		
	Proxy for Mesquite Workforce 30-Minute Commute*	Texas	USA	Proxy for Mesquite Workforce 30-Minute Commute*	Texas	USA
Demographics						
Population (ACS)	—	—	—	1,987,422	27,419,612	321,004,407
Male	49.1%	49.7%	49.2%	975,825	13,616,977	158,018,753
Female	50.9%	50.3%	50.8%	1,011,597	13,802,635	162,985,654
Median Age ²	—	—	—	33.9	34.3	37.8
Under 18 Years	26.7%	26.3%	22.9%	530,107	7,213,117	73,601,279
18 to 24 Years	9.6%	10.0%	9.7%	191,535	2,752,064	31,131,484
25 to 34 Years	15.7%	14.6%	13.7%	312,603	4,002,129	44,044,173
35 to 44 Years	13.8%	13.5%	12.7%	275,059	3,705,119	40,656,419
45 to 54 Years	12.9%	12.7%	13.4%	256,149	3,494,999	43,091,143
55 to 64 Years	10.8%	11.1%	12.7%	214,676	3,036,278	40,747,520
65 to 74 Years	6.3%	7.0%	8.6%	125,153	1,915,612	27,503,389
75 Years, and Over	4.1%	4.7%	6.3%	82,140	1,300,294	20,229,000
Race: White	62.2%	74.6%	73.0%	1,236,195	20,459,525	234,370,202
Race: Black or African American	23.7%	12.0%	12.7%	470,333	3,286,950	40,610,815
Race: American Indian and Alaska Native	0.3%	0.5%	0.8%	6,166	130,360	2,632,102
Race: Asian	4.8%	4.5%	5.4%	94,849	1,236,852	17,186,320
Race: Native Hawaiian and Other Pacific Islander	0.0%	0.1%	0.2%	858	23,531	570,116
Race: Some Other Race	6.2%	5.8%	4.8%	123,615	1,580,393	15,553,808
Race: Two or More Races	2.8%	2.6%	3.1%	55,406	702,001	10,081,044
Hispanic or Latino (of any race)	34.7%	38.9%	17.6%	689,306	10,673,909	56,510,571
Economic						
Labor Force Participation Rate and Size (civilian population 16 years and over)	67.8%	64.4%	63.3%	1,025,103	13,473,957	161,159,470
Prime-Age Labor Force Participation Rate and Size (civilian population 25-54)	81.6%	80.2%	81.6%	688,247	8,945,583	103,761,701
Armed Forces Labor Force	0.0%	0.4%	0.4%	554	91,081	1,024,855
Veterans, Age 18-64	3.6%	5.2%	4.9%	45,231	872,423	9,667,749
Veterans Labor Force Participation Rate and Size, Age 18-64	79.3%	77.6%	75.8%	35,854	677,079	7,326,514
Median Household Income ²	—	—	—	\$60,503	\$57,051	\$57,652
Per Capita Income	—	—	—	\$30,489	\$28,985	\$31,177
Poverty Level (of all people)	17.6%	16.0%	14.6%	345,056	4,291,384	45,650,345
Households Receiving Food Stamps/SNAP	14.1%	12.7%	12.6%	99,982	1,196,016	15,029,498

Summary¹

	Percent			Value		
	Proxy for Mesquite Workforce 30-Minute Commute*			Proxy for Mesquite Workforce 30-Minute Commute*		
	Texas	USA		Texas	USA	
Mean Commute Time (minutes)	—	—	—	28.5	26.1	26.4
Commute via Public Transportation	3.0%	1.5%	5.1%	28,288	187,311	7,607,907
Educational Attainment, Age 25-64						
No High School Diploma	19.7%	16.1%	11.4%	208,569	2,287,734	19,230,541
High School Graduate	22.3%	24.7%	26.0%	236,098	3,517,552	43,784,920
Some College, No Degree	20.9%	22.4%	21.2%	221,316	3,183,316	35,803,629
Associate's Degree	6.2%	7.4%	9.0%	65,284	1,051,162	15,199,517
Bachelor's Degree	20.3%	19.7%	20.5%	215,261	2,808,143	34,602,913
Postgraduate Degree	10.6%	9.8%	11.8%	111,959	1,390,618	19,917,735
Housing						
Total Housing Units	—	—	—	772,956	10,611,386	135,393,564
Median House Value (of owner-occupied units) ²	—	—	—	\$207,490	\$151,500	\$193,500
Homeowner Vacancy	1.4%	1.6%	1.7%	5,569	94,134	1,346,331
Rental Vacancy	7.3%	7.6%	6.1%	26,521	300,975	2,838,344
Renter-Occupied Housing Units (% of Occupied Units)	46.8%	38.0%	36.2%	331,548	3,579,373	42,992,786
Occupied Housing Units with No Vehicle Available (% of Occupied Units)	7.5%	5.5%	8.8%	53,247	517,945	10,468,418
Social						
Enrolled in Grade 12 (% of total population)	1.4%	1.5%	1.4%	28,581	398,124	4,437,324
Disconnected Youth ³	3.1%	3.0%	2.7%	3,290	47,251	456,548
Children in Single Parent Families (% of all children)	41.3%	34.9%	34.5%	208,246	2,396,094	24,106,567
With a Disability, Age 18-64	8.8%	9.7%	10.3%	108,457	1,613,122	20,276,199
With a Disability, Age 18-64, Labor Force Participation Rate and Size	45.3%	44.4%	41.4%	49,113	716,525	8,395,884
Foreign Born	20.5%	16.9%	13.4%	407,372	4,622,395	43,028,127
Speak English Less Than Very Well (population 5 yrs and over)	17.2%	14.1%	8.5%	316,577	3,576,480	25,654,421

Source: [JobsEQ®](#)

1. American Community Survey 2013-2017, unless noted otherwise

2. Median values for certain aggregate regions (such as MSAs) may be estimated as the weighted averages of the median values from the composing counties.

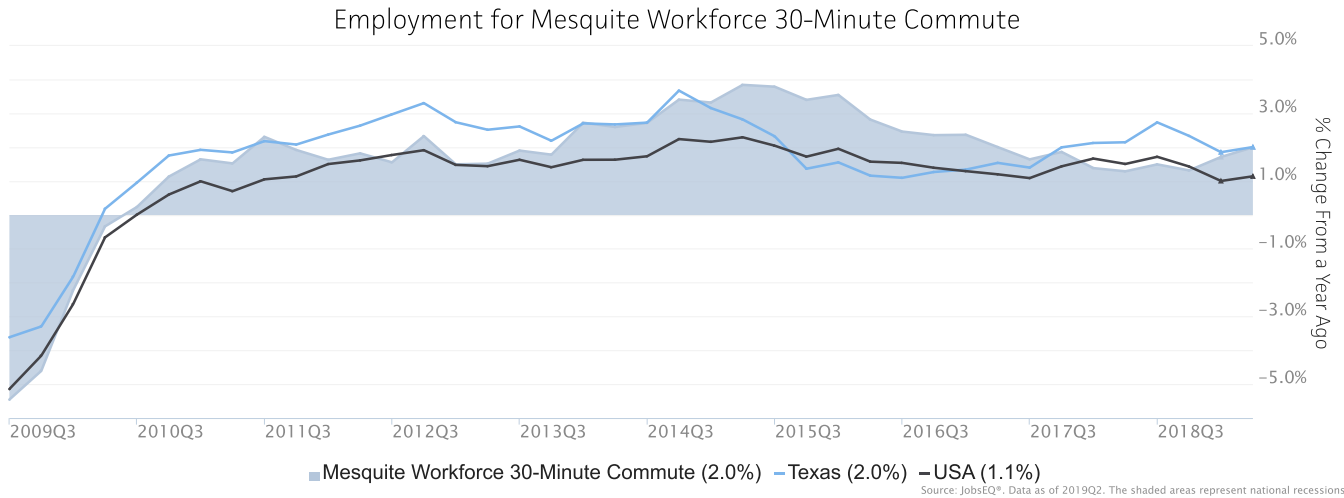
3. Disconnected Youth are 16-19 year olds who are (1) not in school, (2) not high school graduates, and (3) either unemployed or not in the labor force.

4. Census 2018, annual average growth rate since 2008

* This user-defined region contains one or more partial ZCTA areas. Any such partial ZCTA within this region definition has been replaced by the full ZCTA for purposes of being described via the above data.

Employment Trends

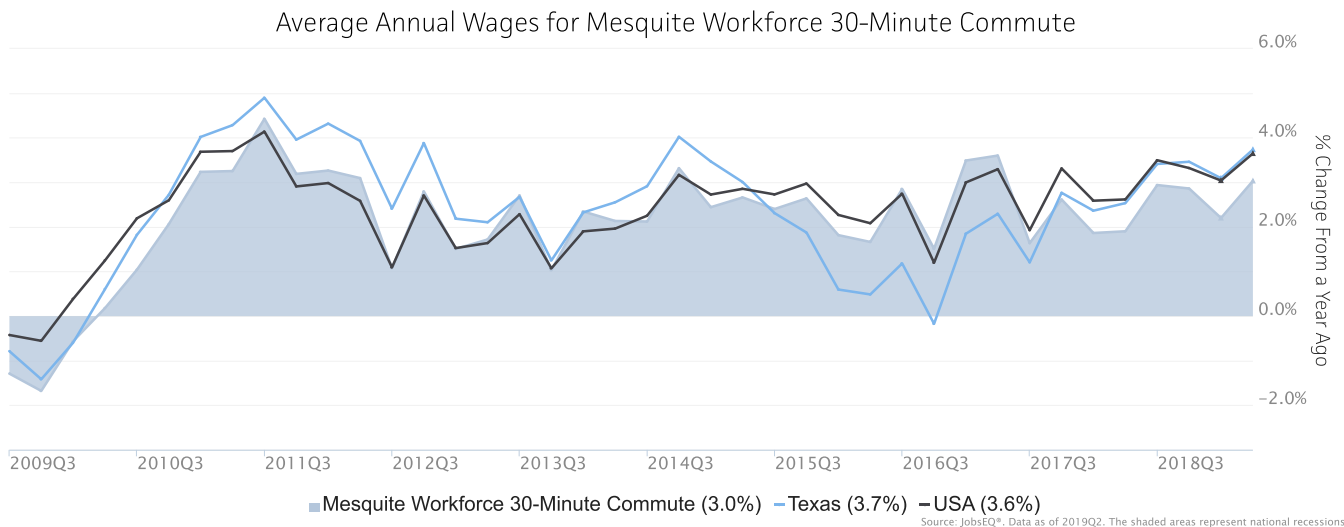
As of 2019Q2, total employment for the Mesquite Workforce 30-Minute Commute was 1,181,363 (based on a four-quarter moving average). Over the year ending 2019Q2, employment increased 2.0% in the region.



Employment data are derived from the Quarterly Census of Employment and Wages, provided by the Bureau of Labor Statistics and imputed where necessary. Data are updated through 2018Q4 with preliminary estimates updated to 2019Q2.

Wage Trends

The average worker in the Mesquite Workforce 30-Minute Commute earned annual wages of \$66,909 as of 2019Q2. Average annual wages per worker increased 3.0% in the region over the preceding four quarters. For comparison purposes, annual average wages were \$57,025 in the nation as of 2019Q2.



Annual average wages per worker data are derived from the Quarterly Census of Employment and Wages, provided by the Bureau of Labor Statistics and imputed where necessary. Data are updated through 2018Q4 with preliminary estimates updated to 2019Q2.

Cost of Living Index

The Cost of Living Index estimates the relative price levels for consumer goods and services. When applied to wages and salaries, the result is a measure of relative purchasing power. The cost of living is 2.7% higher in Mesquite Workforce 30-Minute Commute than the U.S. average.

Cost of Living Information			
	Annual Average Salary	Cost of Living Index (Base US)	US Purchasing Power
Mesquite Workforce 30-Minute Commute	\$66,909	102.7	\$65,155
Texas	\$57,120	93.9	\$60,804
USA	\$57,025	100.0	\$57,025

Source: [JobsEQ®](#)

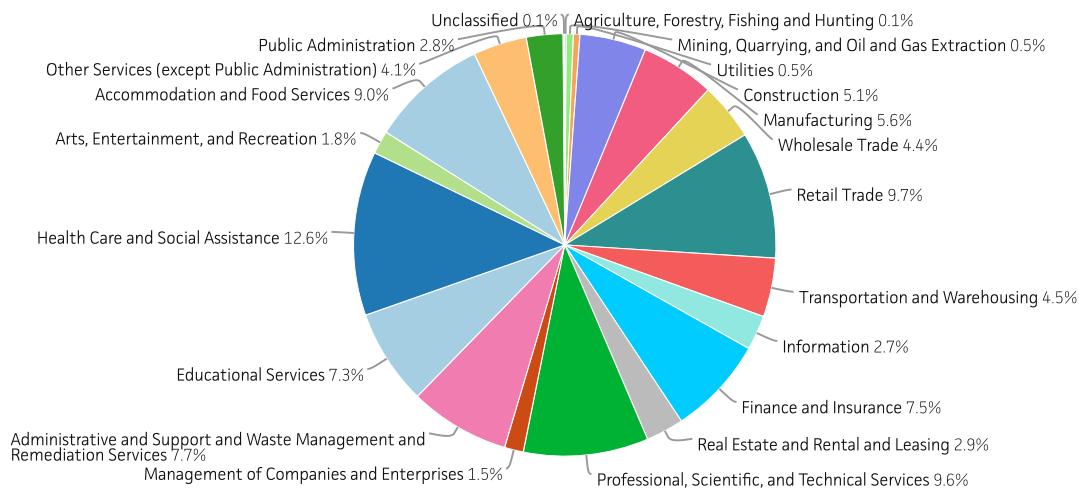
Data as of 2019Q2

Cost of Living per C2ER, data as of 2019q2, imputed by Chmura where necessary.

Industry Snapshot

The largest sector in the Mesquite Workforce 30-Minute Commute is Health Care and Social Assistance, employing 148,456 workers. The next-largest sectors in the region are Retail Trade (114,812 workers) and Professional, Scientific, and Technical Services (113,000). High location quotients (LQs) indicate sectors in which a region has high concentrations of employment compared to the national average. The sectors with the largest LQs in the region are Finance and Insurance (LQ = 1.91), Real Estate and Rental and Leasing (1.68), and Professional, Scientific, and Technical Services (1.43).

Total Workers for Mesquite Workforce 30-Minute Commute by Industry



Source: JobsEQ®, Data as of 2019Q2

Employment data are derived from the Quarterly Census of Employment and Wages, provided by the Bureau of Labor Statistics and imputed where necessary. Data are updated through 2018Q4 with preliminary estimates updated to 2019Q2.

Sectors in the Mesquite Workforce 30-Minute Commute with the highest average wages per worker are Mining, Quarrying, and Oil and Gas Extraction (\$203,967), Management of Companies and Enterprises (\$128,815), and Professional, Scientific, and Technical Services (\$107,700). Regional sectors with the best job growth (or most moderate job losses) over the last 5 years are Professional, Scientific, and Technical Services (+17,927 jobs), Health Care and Social Assistance (+16,725), and Transportation and Warehousing (+16,041).

Over the next 1 year, employment in the Mesquite Workforce 30-Minute Commute is projected to expand by 18,737 jobs. The fastest growing sector in the region is expected to be Health Care and Social Assistance with a +2.9% year-over-year rate of growth. The strongest forecast by number of jobs over this period is expected for Health Care and Social Assistance (+4,282 jobs), Professional, Scientific, and Technical Services (+2,144), and Accommodation and Food Services (+1,608).

NAICS	Industry	Current			5-Year History		1-Year Forecast				
		Empl	Avg Ann Wages	LQ	Empl Change	Ann %	Total Demand	Exits	Transfers	Empl Growth	Ann % Growth
62	Health Care and Social Assistance	148,456	\$62,098	0.87	16,725	2.4%	18,373	6,923	7,168	4,282	2.9%
44	Retail Trade	114,812	\$39,089	0.93	9,812	1.8%	16,560	6,796	8,580	1,184	1.0%
54	Professional, Scientific, and Technical Services	113,000	\$107,700	1.43	17,927	3.5%	11,902	3,662	6,096	2,144	1.9%
72	Accommodation and Food Services	106,400	\$24,178	1.00	12,905	2.6%	18,909	7,659	9,641	1,608	1.5%
56	Administrative and Support and Waste Management and Remediation Services	90,702	\$45,606	1.19	10,503	2.5%	12,102	4,468	6,048	1,586	1.7%
52	Finance and Insurance	88,820	\$105,379	1.91	7,566	1.8%	9,835	3,231	5,202	1,402	1.6%
61	Educational Services	86,613	\$53,327	0.90	10,245	2.5%	9,319	3,880	4,173	1,266	1.5%
31	Manufacturing	66,616	\$81,262	0.68	3,427	1.1%	7,042	2,574	4,387	81	0.1%
23	Construction	60,007	\$65,851	0.89	8,150	3.0%	7,049	2,132	3,800	1,117	1.9%
48	Transportation and Warehousing	53,359	\$52,574	1.01	16,041	7.4%	6,517	2,427	3,255	835	1.6%
42	Wholesale Trade	51,936	\$90,240	1.15	220	0.1%	5,916	2,068	3,407	441	0.8%
81	Other Services (except Public Administration)	48,596	\$38,795	0.95	3,965	1.7%	6,274	2,533	3,013	728	1.5%
53	Real Estate and Rental and Leasing	34,262	\$81,265	1.68	6,141	4.0%	3,932	1,600	1,899	433	1.3%
92	Public Administration	33,058	\$76,607	0.60	1,791	1.1%	3,405	1,296	1,755	354	1.1%
51	Information	31,416	\$106,038	1.36	-393	-0.2%	3,228	1,117	1,945	165	0.5%
71	Arts, Entertainment, and Recreation	21,085	\$46,065	0.89	3,903	4.2%	3,335	1,335	1,636	364	1.7%
55	Management of Companies and Enterprises	17,155	\$128,815	0.97	4,432	6.2%	1,786	582	980	224	1.3%
21	Mining, Quarrying, and Oil and Gas Extraction	6,358	\$203,967	1.21	-544	-1.6%	809	214	437	159	2.5%
22	Utilities	5,827	\$98,187	0.96	85	0.3%	609	192	337	81	1.4%
11	Agriculture, Forestry, Fishing and Hunting	1,544	\$20,852	0.10	-82	-1.0%	193	72	95	25	1.6%
99	Unclassified	1,341	\$39,742	1.06	1,057	36.4%	173	64	88	21	1.6%
Total - All Industries		1,181,363	\$66,909	1.00	133,875	2.4%	148,435	55,599	74,099	18,737	1.6%

Source: [JobsEQ®](#)

Employment data are derived from the Quarterly Census of Employment and Wages, provided by the Bureau of Labor Statistics and imputed where necessary. Data are updated through 2018Q4 with preliminary estimates updated to 2019Q2. Forecast employment growth uses national projections adapted for regional growth patterns.

Occupation Snapshot

The largest major occupation group in the Mesquite Workforce 30-Minute Commute is Office and Administrative Support Occupations, employing 206,100 workers. The next-largest occupation groups in the region are Sales and Related Occupations (131,077 workers) and Food Preparation and Serving Related Occupations (100,858). High location quotients (LQs) indicate occupation groups in which a region has high concentrations of employment compared to the national average. The major groups with the largest LQs in the region are Legal Occupations (LQ = 1.53), Computer and Mathematical Occupations (1.31), and Office and Administrative Support Occupations (1.22).

Occupation groups in the Mesquite Workforce 30-Minute Commute with the highest average wages per worker are Management Occupations (\$130,900), Legal Occupations (\$120,600), and Architecture and Engineering Occupations (\$97,800). The unemployment rate in the region varied among the major groups from 1.4% among Legal Occupations to 7.3% among Farming, Fishing, and Forestry Occupations.

Over the next 1 year, the fastest growing occupation group in the Mesquite Workforce 30-Minute Commute is expected to be Healthcare Support Occupations with a +3.3% year-over-year rate of growth. The strongest forecast by number of jobs over this period is expected for Office and Administrative Support Occupations (+2,076 jobs) and Food Preparation and Serving Related Occupations (+1,634). Over the same period, the highest separation demand (occupation demand due to retirements and workers moving from one occupation to another) is expected in Office and Administrative Support Occupations (23,874 jobs) and Food Preparation and Serving Related Occupations (18,232).

Occupation Snapshot in Mesquite Workforce 30-Minute Commute, 2019q2¹

SOC	Occupation	Current					5-Year History			1-Year Forecast				
		Empl	Avg Ann Wages ²	LQ	Unempl	Rate	Online Job Ads ³	Empl Change	Ann %	Total Demand	Exits	Transfers	Empl Growth	Ann % Growth
43-0000	Office and Administrative Support	206,100	\$40,500	1.22	5,845	3.4%	7,825	12,436	1.3%	25,950	10,977	12,897	2,076	1.0%
41-0000	Sales and Related	131,077	\$48,700	1.11	4,882	4.2%	8,546	11,984	1.9%	19,339	7,491	10,288	1,560	1.2%
35-0000	Food Preparation and Serving Related	100,858	\$24,900	0.99	6,030	6.0%	6,075	12,163	2.6%	19,866	8,125	10,107	1,634	1.6%
53-0000	Transportation and Material Moving	79,487	\$41,900	0.97	4,312	4.8%	2,802	14,747	4.2%	11,276	4,049	6,024	1,204	1.5%
13-0000	Business and Financial Operations	75,671	\$81,700	1.22	1,322	2.3%	7,207	12,429	3.7%	8,368	2,351	4,681	1,336	1.8%
11-0000	Management	64,465	\$130,900	0.89	877	1.6%	7,384	10,891	3.8%	6,511	1,733	3,598	1,180	1.8%
29-0000	Healthcare Practitioners and Technical	63,533	\$83,800	0.94	697	1.4%	4,918	8,152	2.8%	5,191	1,836	1,795	1,560	2.5%
25-0000	Education, Training, and Library	56,932	\$54,300	0.86	1,375	2.8%	3,678	6,177	2.3%	5,985	2,578	2,498	910	1.6%
51-0000	Production	54,365	\$38,800	0.77	2,466	4.1%	1,624	2,156	0.8%	6,565	2,354	3,934	278	0.5%
49-0000	Installation, Maintenance, and Repair	46,882	\$49,900	1.03	1,229	2.7%	2,407	5,388	2.5%	5,281	1,709	2,945	627	1.3%
47-0000	Construction and Extraction	46,142	\$44,300	0.84	3,202	5.6%	814	4,785	2.2%	5,874	1,716	3,289	869	1.9%
15-0000	Computer and Mathematical	45,289	\$95,700	1.31	667	1.9%	10,353	9,896	5.1%	4,106	823	2,332	952	2.1%
39-0000	Personal Care and Service	42,701	\$25,400	0.83	1,672	4.5%	1,621	8,889	4.8%	8,003	3,571	3,255	1,177	2.8%
37-0000	Building and Grounds Cleaning and Maintenance	33,422	\$28,400	0.82	2,002	5.0%	1,368	2,433	1.5%	4,972	2,197	2,234	540	1.6%
31-0000	Healthcare Support	31,594	\$32,900	0.97	851	3.2%	1,401	1,544	1.0%	4,980	1,964	1,970	1,046	3.3%
33-0000	Protective Service	25,044	\$45,200	0.98	656	3.3%	632	2,598	2.2%	3,274	1,388	1,541	344	1.4%
27-0000	Arts, Design, Entertainment, Sports, and Media	21,535	\$56,200	1.03	426	2.5%	1,210	1,682	1.6%	2,420	882	1,247	292	1.4%
17-0000	Architecture and Engineering	21,284	\$97,800	1.06	346	2.0%	1,117	1,752	1.7%	1,931	569	1,042	320	1.5%
23-0000	Legal	15,077	\$120,600	1.53	139	1.4%	406	1,613	2.3%	1,274	406	608	260	1.7%
21-0000	Community and Social Service	12,435	\$54,200	0.64	206	1.9%	1,150	1,545	2.7%	1,717	550	893	274	2.2%

Occupation Snapshot in Mesquite Workforce 30-Minute Commute, 2019q2¹

SOC	Occupation	Current						5-Year History			1-Year Forecast			
		Empl	Avg Ann Wages ²	LQ	Unempl	Unempl Rate	Online Job Ads ³	Empl Change	Ann %	Total Demand	Exits	Transfers	Empl Growth	Ann % Growth
19- 0000	Life, Physical, and Social Science	6,232	\$79,000	0.67	120	2.2%	669	565	1.9%	704	175	416	113	1.8%
45- 0000	Farming, Fishing, and Forestry	1,237	\$27,700	0.16	159	7.3%	8	47	0.8%	199	48	138	13	1.0%
Total - All Occupations		1,181,363	\$54,500	1.00	39,480	3.7%	73,215	133,875	2.4%	153,962	57,493	77,731	18,737	1.6%

Source: [JobsEQ®](http://www.chmuraecon.com/jobseq)

Data as of 2019Q2 unless noted otherwise

Note: Figures may not sum due to rounding.

1. Data based on a four-quarter moving average unless noted otherwise.

2. Occupation wages are as of 2018 and should be taken as the average for all Covered Employment

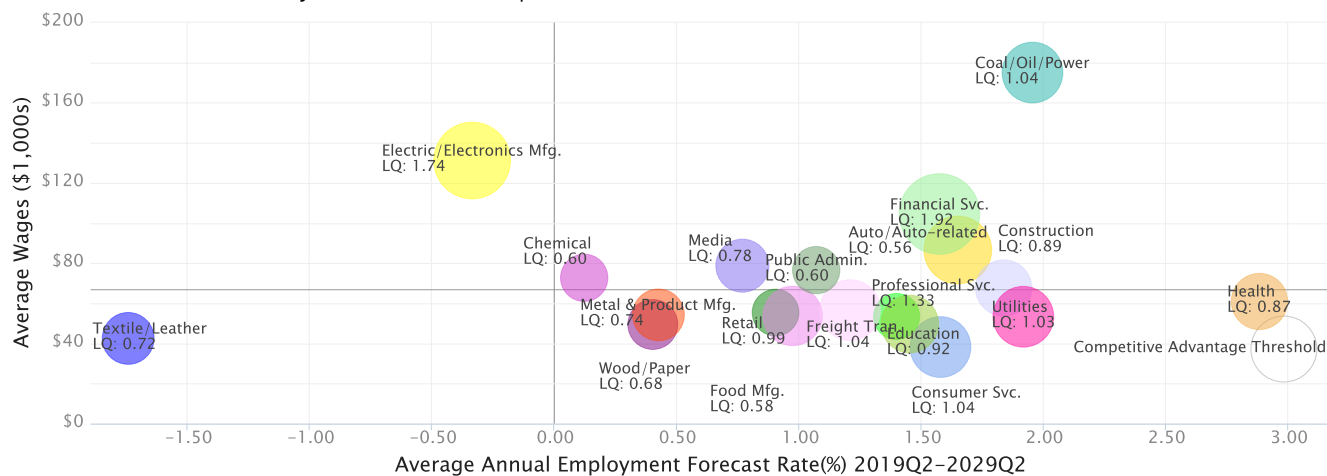
3. Data represent found online ads active within the last thirty days in the selected region; data represents a sampling rather than the complete universe of postings. Ads lacking zip code information but designating a place (city, town, etc.) may be assigned to the zip code with greatest employment in that place for queries in this analytic. Due to alternative county-assignment algorithms, ad counts in this analytic may not match that shown in RTI (nor in the popup window ad list).

Occupation employment data are estimated via industry employment data and the estimated industry/occupation mix. Industry employment data are derived from the Quarterly Census of Employment and Wages, provided by the Bureau of Labor Statistics and currently updated through 2018Q4, imputed where necessary with preliminary estimates updated to 2019Q2. Wages by occupation are as of 2018 provided by the BLS and imputed where necessary. Forecast employment growth uses national projections from the Bureau of Labor Statistics adapted for regional growth patterns.

Industry Clusters

A cluster is a geographic concentration of interrelated industries or occupations. The industry cluster in the Mesquite Workforce 30-Minute Commute with the highest relative concentration is Financial Svc. with a location quotient of 1.92. This cluster employs 89,312 workers in the region with an average wage of \$104,590. Employment in the Financial Svc. cluster is projected to expand in the region about 1.6% per year over the next ten years.

Industry Clusters for Mesquite Workforce 30-Minute Commute as of 2019Q2



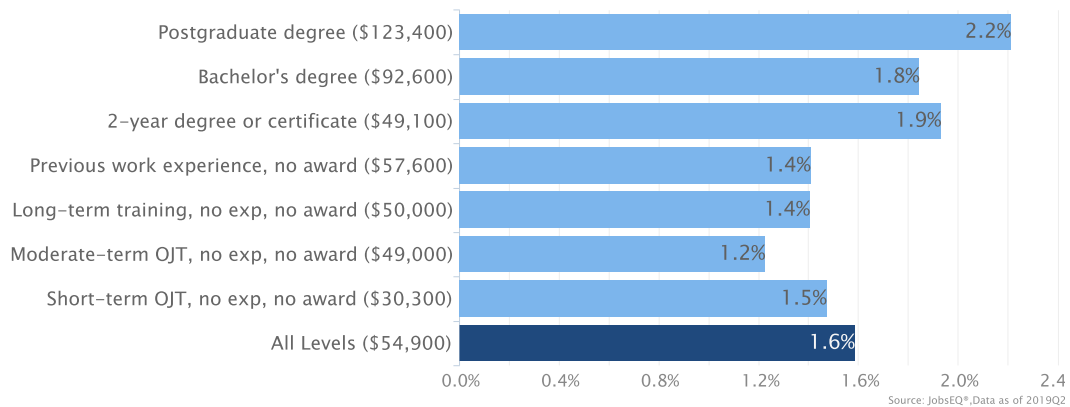
Source: JobsEQ® Data as of 2019Q2

Location quotient and average wage data are derived from the Quarterly Census of Employment and Wages, provided by the Bureau of Labor Statistics, imputed where necessary, and updated through 2018Q4 with preliminary estimates updated to 2019Q2. Forecast employment growth uses national projections from the Bureau of Labor Statistics adapted for regional growth patterns.

Education Levels

Expected growth rates for occupations vary by the education and training required. While all employment in the Mesquite Workforce 30-Minute Commute is projected to grow 1.6% over the next ten years, occupations typically requiring a postgraduate degree are expected to grow 2.2% per year, those requiring a bachelor's degree are forecast to grow 1.8% per year, and occupations typically needing a 2-year degree or certificate are expected to grow 1.9% per year.

Annual Average Projected Job Growth by Training Required for Mesquite Workforce 30-Minute Commute



Employment by occupation data are estimates as of 2019Q2. Education levels of occupations are based on BLS assignments. Forecast employment growth uses national projections from the Bureau of Labor Statistics adapted for regional growth patterns.

Region Definition

Mesquite Workforce 30-Minute Commute is defined as the following zip code tabulation areas:

ZCTA 75001	ZCTA 75180
ZCTA 75032	ZCTA 75181
ZCTA 75040	ZCTA 75182
ZCTA 75041	ZCTA 75201
ZCTA 75042	ZCTA 75202
ZCTA 75043	ZCTA 75203
ZCTA 75044 (Collin County, TX portion)	ZCTA 75204
ZCTA 75044 (Dallas County, TX portion)	ZCTA 75205
ZCTA 75048 (Collin County, TX portion)	ZCTA 75206
ZCTA 75048 (Dallas County, TX portion)	ZCTA 75207
ZCTA 75080 (Collin County, TX portion)	ZCTA 75208
ZCTA 75080 (Dallas County, TX portion)	ZCTA 75210
ZCTA 75081	ZCTA 75212
ZCTA 75082 (Collin County, TX portion)	ZCTA 75214
ZCTA 75082 (Dallas County, TX portion)	ZCTA 75215
ZCTA 75087 (Collin County, TX portion)	ZCTA 75216
ZCTA 75087 (Rockwall County, TX portion)	ZCTA 75217
ZCTA 75088 (Dallas County, TX portion)	ZCTA 75218
ZCTA 75088 (Rockwall County, TX portion)	ZCTA 75219
ZCTA 75089 (Dallas County, TX portion)	ZCTA 75223
ZCTA 75089 (Rockwall County, TX portion)	ZCTA 75224
ZCTA 75098 (Rockwall County, TX portion)	ZCTA 75225
ZCTA 75114	ZCTA 75226
ZCTA 75115	ZCTA 75227
ZCTA 75116	ZCTA 75228
ZCTA 75125 (Dallas County, TX portion)	ZCTA 75230
ZCTA 75126	ZCTA 75231
ZCTA 75132	ZCTA 75232
ZCTA 75134	ZCTA 75233
ZCTA 75137	ZCTA 75237
ZCTA 75141	ZCTA 75238
ZCTA 75146 (Dallas County, TX portion)	ZCTA 75240
ZCTA 75146 (Ellis County, TX portion)	ZCTA 75241
ZCTA 75149	ZCTA 75243
ZCTA 75150	ZCTA 75244
ZCTA 75159 (Dallas County, TX portion)	ZCTA 75246

Mesquite Workforce 30-Minute Commute is defined as the following zip code tabulation areas:

ZCTA 75159 (Kaufman County, TX portion)

ZCTA 75251

ZCTA 75160 (Kaufman County, TX portion)

ZCTA 75253

ZCTA 75160 (Rockwall County, TX portion)

ZCTA 75254

ZCTA 75172

ZCTA 75270

FAQ

What is a location quotient?

A location quotient (LQ) is a measurement of concentration in comparison to the nation. An LQ of 1.00 indicates a region has the same concentration of an industry (or occupation) as the nation. An LQ of 2.00 would mean the region has twice the expected employment compared to the nation and an LQ of 0.50 would mean the region has half the expected employment in comparison to the nation.

What is separation demand?

Separation demand is the number of jobs required due to separations—labor force exits (including retirements) and turnover resulting from workers moving from one occupation into another. Note that separation demand does not include all turnover—it does not include when workers stay in the same occupation but switch employers. The total projected demand for an occupation is the sum of the separation demand and the growth demand (which is the increase or decrease of jobs in an occupation expected due to expansion or contraction of the overall number of jobs in that occupation).

What is a cluster?

A cluster is a geographic concentration of interrelated industries or occupations. If a regional cluster has a location quotient of 1.25 or greater, the region is considered to possess a *competitive advantage* in that cluster.

What is the difference between industry wages and occupation wages?

Industry wages and occupation wages are estimated via separate data sets, often the time periods being reported do not align, and wages are defined slightly differently in the two systems (for example, certain bonuses are included in the industry wages but not the occupation wages). It is therefore common that estimates of the average industry wages and average occupation wages in a region do not match exactly.

What is NAICS?

The North American Industry Classification System (NAICS) is used to classify business establishments according to the type of economic activity. The NAICS Code comprises six levels, from the “all industry” level to the 6-digit level. The first two digits define the top level category, known as the “sector,” which is the level examined in this report.

What is SOC?

The Standard Occupational Classification system (SOC) is used to classify workers into occupational categories. All workers are classified into one of over 820 occupations according to their occupational definition. To facilitate classification, occupations are combined to form 23 major groups, 96 minor groups, and 449 occupation groups. Each occupation group includes detailed occupations requiring similar job duties, skills, education, or experience.

About This Report

This report and all data herein were produced by JobsEQ®, a product of Chmura Economics & Analytics. The information contained herein was obtained from sources we believe to be reliable. However, we cannot guarantee its accuracy and completeness.