

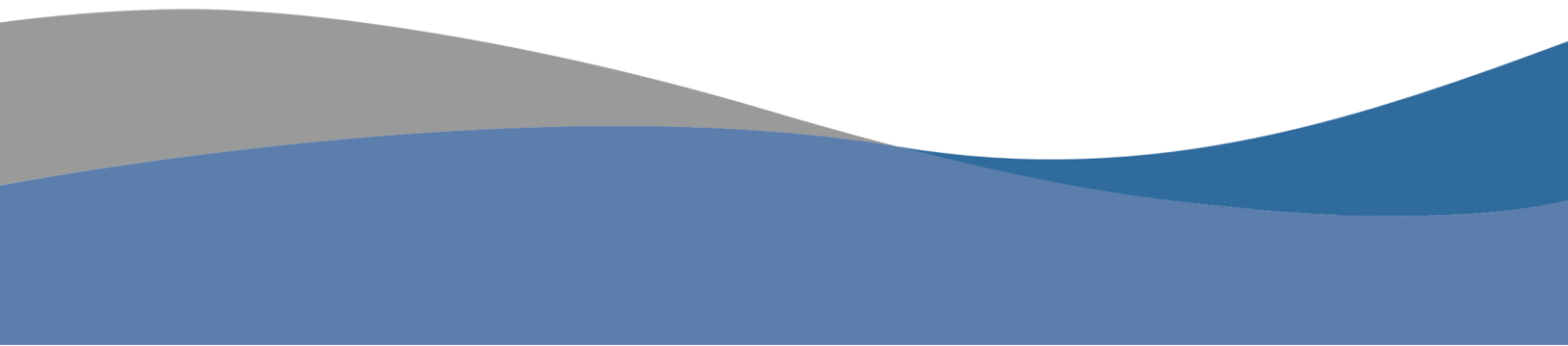


# Economic Overview

---

# Dallas County, Texas

---



Demographic Profile..... 3

Employment Trends ..... 5

Unemployment Rate ..... 5

Wage Trends ..... 6

Cost of Living Index ..... 7

Industry Snapshot ..... 8

Occupation Snapshot ..... 10

Industry Clusters ..... 12

Education Levels..... 13

Gross Domestic Product..... 14

Dallas County, Texas Regional Map ..... 15

FAQ..... 16

# Demographic Profile

The population in Dallas County, Texas was 2,586,552 per American Community Survey data for 2014-2018.

The region has a civilian labor force of 1,353,911 with a participation rate of 68.7%. Of individuals 25 to 64 in Dallas County, Texas, 30.8% have a bachelor's degree or higher which compares with 32.9% in the nation.

The median household income in Dallas County, Texas is \$56,854 and the median house value is \$161,500.

## Summary<sup>1</sup>

	Dallas County, Texas	Percent City of Mesquite, TX	USA	Dallas County, Texas	Value City of Mesquite, TX	USA
<b>Demographics</b>						
Population (ACS)	—	—	—	2,586,552	144,250	322,903,030
Male	49.3%	48.4%	49.2%	1,275,226	69,826	158,984,190
Female	50.7%	51.6%	50.8%	1,311,326	74,424	163,918,840
Median Age <sup>2</sup>	—	—	—	33.3	32.5	37.9
Under 18 Years	26.6%	29.2%	22.8%	687,769	42,139	73,553,240
18 to 24 Years	9.7%	10.5%	9.6%	250,073	15,075	30,903,719
25 to 34 Years	16.3%	13.4%	13.8%	421,527	19,318	44,567,976
35 to 44 Years	13.9%	13.0%	12.6%	359,293	18,776	40,763,210
45 to 54 Years	12.7%	13.4%	13.2%	327,994	19,270	42,589,573
55 to 64 Years	10.7%	10.6%	12.8%	276,104	15,308	41,286,731
65 to 74 Years	6.2%	5.9%	8.8%	160,112	8,508	28,535,419
75 Years, and Over	4.0%	4.1%	6.4%	103,680	5,856	20,703,162
Race: White	61.7%	63.5%	72.7%	1,595,565	91,595	234,904,818
Race: Black or African American	22.5%	26.0%	12.7%	582,158	37,489	40,916,113
Race: American Indian and Alaska Native	0.4%	0.8%	0.8%	9,595	1,116	2,699,073
Race: Asian	6.2%	2.9%	5.4%	159,919	4,231	17,574,550
Race: Native Hawaiian and Other Pacific Islander	0.1%	0.1%	0.2%	1,356	81	582,718
Race: Some Other Race	6.6%	3.3%	4.9%	169,597	4,801	15,789,961
Race: Two or More Races	2.6%	3.4%	3.2%	68,362	4,937	10,435,797
Hispanic or Latino (of any race)	39.9%	40.4%	17.8%	1,033,000	58,256	57,517,935
<b>Economic</b>						
Labor Force Participation Rate and Size (civilian population 16 years and over) <sup>5</sup>	68.7%	68.7%	63.2%	1,353,911	73,311	162,248,196
Prime-Age Labor Force Participation Rate and Size (civilian population 25-54) <sup>5</sup>	82.2%	83.1%	81.8%	910,662	47,692	104,136,254
Armed Forces Labor Force <sup>5</sup>	0.0%	0.0%	0.4%	692	17	1,028,133
Veterans, Age 18-64 <sup>5</sup>	3.2%	4.2%	4.7%	52,366	3,707	9,398,789
Veterans Labor Force Participation Rate and Size, Age 18-64 <sup>5</sup>	79.0%	82.2%	76.3%	41,389	3,046	7,168,168
Median Household Income <sup>2,5</sup>	—	—	—	\$56,854	\$56,074	\$60,293
Per Capita Income <sup>5</sup>	—	—	—	\$31,219	\$22,756	\$32,621
Mean Commute Time (minutes) <sup>5</sup>	—	—	—	27.4	31.9	26.6
Commute via Public Transportation <sup>5</sup>	2.8%	0.6%	5.0%	34,940	432	7,602,145
<b>Educational Attainment, Age 25-64</b>						
No High School Diploma	21.3%	19.6%	11.2%	294,757	14,259	18,885,967
High School Graduate	22.5%	29.0%	25.8%	311,958	21,084	43,699,272
Some College, No Degree	19.5%	25.1%	21.0%	269,660	18,267	35,525,113
Associate's Degree	5.9%	8.7%	9.1%	81,847	6,310	15,389,737
Bachelor's Degree	19.9%	12.2%	20.8%	275,490	8,837	35,261,652
Postgraduate Degree	10.9%	5.4%	12.1%	151,206	3,915	20,445,749
<b>Housing</b>						

## Summary<sup>1</sup>

	Percent			Value		
	Dallas County, Texas	City of Mesquite, TX	USA	Dallas County, Texas	City of Mesquite, TX	USA
Total Housing Units	—	—	—	998,874	49,832	136,384,292
Median House Value (of owner-occupied units) <sup>2</sup>	—	—	—	\$161,500	\$129,100	\$204,900
Homeowner Vacancy	1.3%	2.3%	1.7%	6,194	634	1,304,850
Rental Vacancy	7.0%	8.2%	6.0%	34,720	1,804	2,822,053
Renter-Occupied Housing Units (% of Occupied Units)	49.9%	42.5%	36.2%	457,302	19,771	43,285,318
Occupied Housing Units with No Vehicle Available (% of Occupied Units) <sup>5</sup>	6.9%	4.4%	8.7%	63,543	2,034	10,424,934
<b>Social</b>						
Poverty Level (of all people) <sup>5</sup>	16.6%	13.4%	14.1%	423,899	19,184	44,257,979
Households Receiving Food Stamps/SNAP	12.7%	14.1%	12.2%	116,350	6,563	14,635,287
Enrolled in Grade 12 (% of total population)	1.4%	2.0%	1.4%	37,313	2,876	4,442,295
Disconnected Youth <sup>3,5</sup>	3.0%	2.2%	2.6%	4,080	202	438,452
Children in Single Parent Families (% of all children) <sup>5</sup>	41.0%	47.4%	34.3%	268,561	19,043	23,973,249
Uninsured	21.0%	20.8%	9.4%	540,524	29,933	29,752,767
With a Disability, Age 18-64 <sup>5</sup>	8.0%	10.2%	10.3%	130,093	8,923	20,240,504
With a Disability, Age 18-64, Labor Force Participation Rate and Size <sup>5</sup>	45.3%	52.1%	41.6%	58,921	4,653	8,421,018
Foreign Born	24.3%	19.3%	13.5%	628,703	27,787	43,539,499
Speak English Less Than Very Well (population 5 yrs and over)	21.1%	15.0%	8.5%	504,395	20,041	25,647,781

Source: [JobsEQ®](#)

1. American Community Survey 2014-2018, unless noted otherwise

2. Median values for certain aggregate regions (such as MSAs) may be estimated as the weighted averages of the median values from the composing counties.

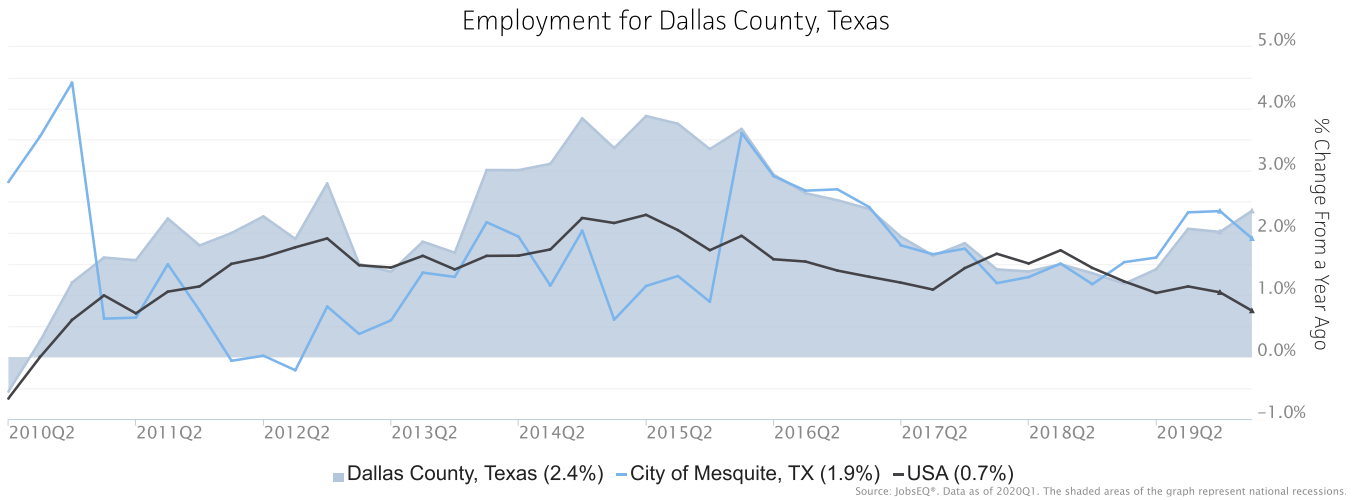
3. Disconnected Youth are 16-19 year olds who are (1) not in school, (2) not high school graduates, and (3) either unemployed or not in the labor force.

4. Census 2019, annual average growth rate since 2009

5. See Rio Arriba errata note in the Data Dictionary.

# Employment Trends

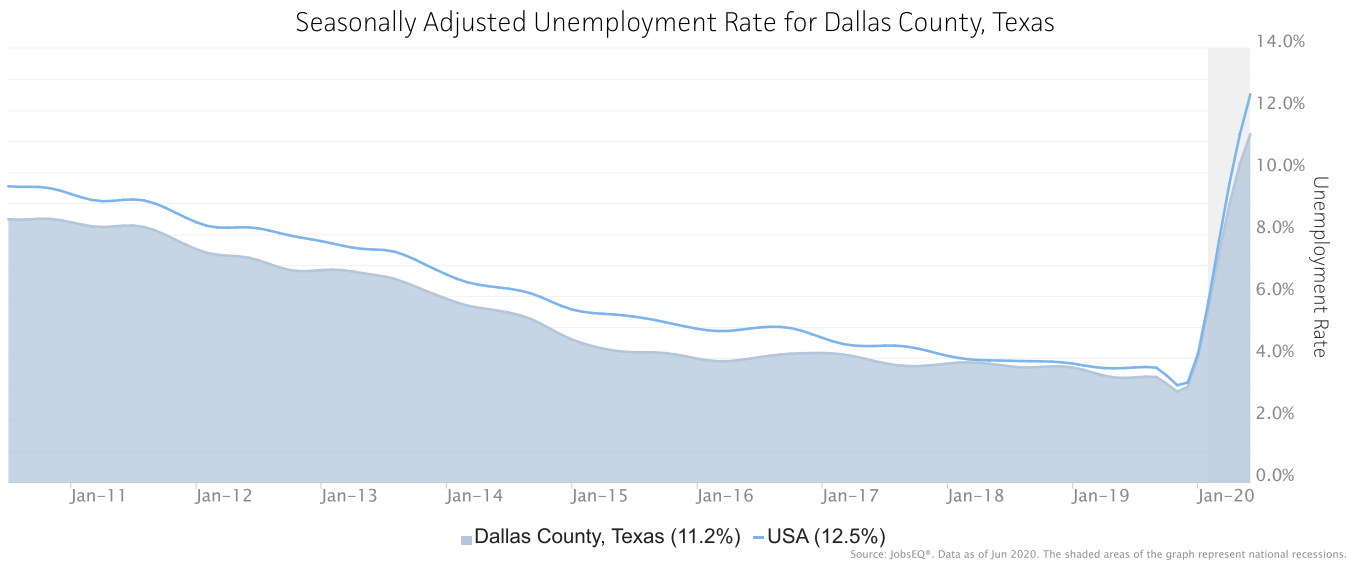
As of 2020Q1, total employment for Dallas County, Texas was 1,852,301 (based on a four-quarter moving average). Over the year ending 2020Q1, employment increased 2.4% in the region.



Employment data are derived from the Quarterly Census of Employment and Wages, provided by the Bureau of Labor Statistics and imputed where necessary. Data are updated through 2019Q3 with preliminary estimates updated to 2020Q1.

# Unemployment Rate

The seasonally adjusted unemployment rate for Dallas County, Texas was 11.2% as of June 2020. The regional unemployment rate was lower than the national rate of 12.5%. One year earlier, in June 2019, the unemployment rate in Dallas County, Texas was 3.4%.

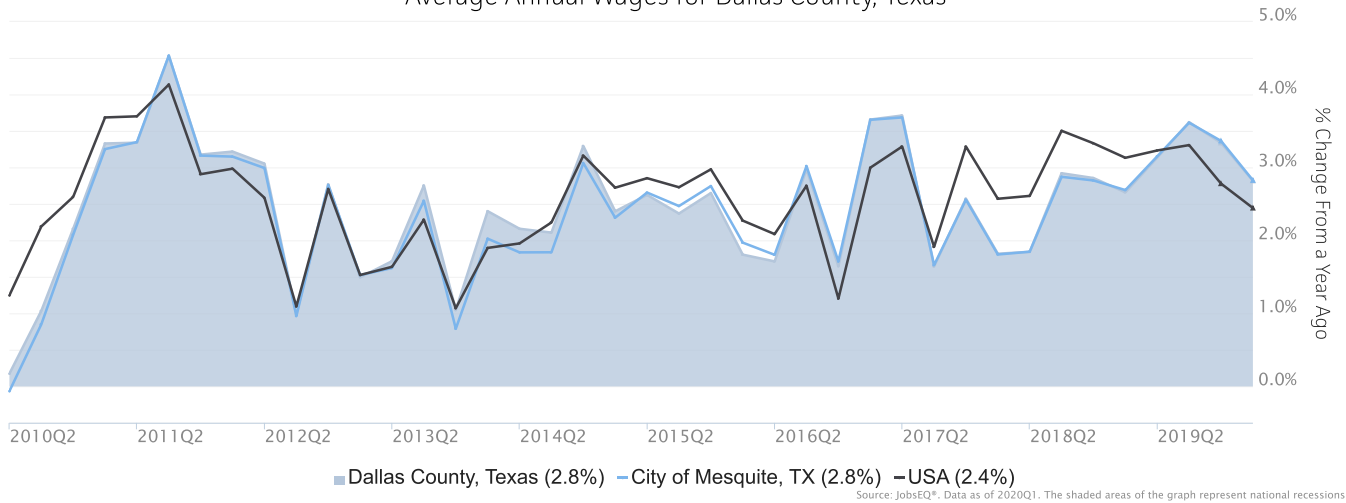


Unemployment rate data are from the Local Area Unemployment Statistics, provided by the Bureau of Labor Statistics and updated through June 2020.

# Wage Trends

The average worker in Dallas County, Texas earned annual wages of \$69,376 as of 2020Q1. Average annual wages per worker increased 2.8% in the region over the preceding four quarters. For comparison purposes, annual average wages were \$57,624 in the nation as of 2020Q1.

Average Annual Wages for Dallas County, Texas



Annual average wages per worker data are derived from the Quarterly Census of Employment and Wages, provided by the Bureau of Labor Statistics and imputed where necessary. Data are updated through 2019Q3 with preliminary estimates updated to 2020Q1.

# Cost of Living Index

The Cost of Living Index estimates the relative price levels for consumer goods and services. When applied to wages and salaries, the result is a measure of relative purchasing power. The cost of living is 3.2% higher in Dallas County, Texas than the U.S. average.

## Cost of Living Information

	Annual Average Salary	Cost of Living Index (Base US)	US Purchasing Power
Dallas County, Texas	\$69,376	103.2	\$67,235
City of Mesquite, TX	\$67,809	103.2	\$65,716
USA	\$57,624	100.0	\$57,624

Source: [JobsEQ®](#)

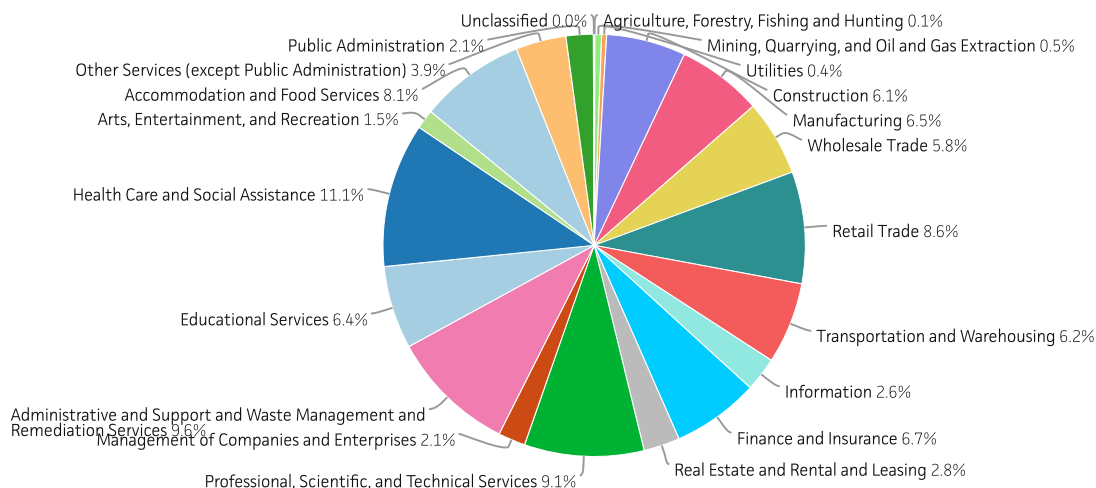
Data as of 2020Q1

Cost of Living per C2ER, data as of 2020q1, imputed by Chmura where necessary.

# Industry Snapshot

The largest sector in Dallas County, Texas is Health Care and Social Assistance, employing 204,744 workers. The next-largest sectors in the region are Administrative and Support and Waste Management and Remediation Services (177,805 workers) and Professional, Scientific, and Technical Services (169,452). High location quotients (LQs) indicate sectors in which a region has high concentrations of employment compared to the national average. The sectors with the largest LQs in the region are Finance and Insurance (LQ = 1.68), Real Estate and Rental and Leasing (1.59), and Wholesale Trade (1.54).

Total Workers for Dallas County, Texas by Industry



Source: JobsEQ®, Data as of 2020Q1

Employment data are derived from the Quarterly Census of Employment and Wages, provided by the Bureau of Labor Statistics and imputed where necessary. Data are updated through 2019Q3 with preliminary estimates updated to 2020Q1.

Sectors in Dallas County, Texas with the highest average wages per worker are Mining, Quarrying, and Oil and Gas Extraction (\$194,831), Management of Companies and Enterprises (\$132,517), and Information (\$108,427). Regional sectors with the best job growth (or most moderate job losses) over the last 5 years are Transportation and Warehousing (+34,284 jobs), Professional, Scientific, and Technical Services (+27,227), and Health Care and Social Assistance (+23,236).

Over the next 1 year, employment in Dallas County, Texas is projected to expand by 23,428 jobs. The fastest growing sector in the region is expected to be Health Care and Social Assistance with a +2.4% year-over-year rate of growth. The strongest forecast by number of jobs over this period is expected for Health Care and Social Assistance (+4,852 jobs), Professional, Scientific, and Technical Services (+3,173), and Accommodation and Food Services (+2,409).



NAICS	Industry	Empl	Current	5-Year History			1-Year Forecast				
			Avg Ann Wages	LQ	Empl Change	Ann %	Total Demand	Exits	Transfers	Empl Growth	Ann % Growth
62	Health Care and Social Assistance	204,744	\$63,394	0.77	23,236	2.4%	24,280	9,552	9,876	4,852	2.4%
56	Administrative and Support and Waste Management and Remediation Services	177,805	\$48,113	1.50	16,780	2.0%	22,799	8,708	11,867	2,224	1.3%
54	Professional, Scientific, and Technical Services	169,452	\$108,040	1.35	27,227	3.6%	17,748	5,423	9,152	3,173	1.9%
44	Retail Trade	158,624	\$42,311	0.84	8,405	1.1%	22,335	9,384	11,848	1,103	0.7%
72	Accommodation and Food Services	149,808	\$25,166	0.90	18,587	2.7%	26,744	10,769	13,566	2,409	1.6%
52	Finance and Insurance	123,305	\$106,764	1.68	4,846	0.8%	12,941	4,381	7,171	1,389	1.1%
31	Manufacturing	120,885	\$84,015	0.80	11,716	2.1%	12,759	4,646	7,953	159	0.1%
61	Educational Services	117,642	\$56,021	0.78	8,077	1.4%	11,956	5,248	5,661	1,047	0.9%
48	Transportation and Warehousing	115,432	\$54,191	1.35	34,284	7.3%	13,774	5,242	7,094	1,439	1.2%
23	Construction	112,437	\$67,056	1.06	16,200	3.2%	12,990	3,978	7,107	1,905	1.7%
42	Wholesale Trade	107,740	\$91,737	1.54	-127	0.0%	11,943	4,269	7,064	610	0.6%
81	Other Services (except Public Administration)	71,336	\$39,865	0.87	4,236	1.2%	8,863	3,717	4,435	711	1.0%
53	Real Estate and Rental and Leasing	51,311	\$86,252	1.59	9,426	4.1%	5,842	2,370	2,836	636	1.2%
51	Information	48,423	\$108,427	1.33	-2,534	-1.0%	4,798	1,689	2,986	123	0.3%
92	Public Administration	38,766	\$77,880	0.44	1,515	0.8%	3,917	1,511	2,053	354	0.9%
55	Management of Companies and Enterprises	38,726	\$132,517	1.38	8,976	5.4%	3,961	1,298	2,209	454	1.2%
71	Arts, Entertainment, and Recreation	27,282	\$49,323	0.73	4,056	3.3%	4,265	1,723	2,127	415	1.5%
21	Mining, Quarrying, and Oil and Gas Extraction	9,279	\$194,831	1.17	220	0.5%	982	308	638	36	0.4%
22	Utilities	7,211	\$105,062	0.76	291	0.8%	708	236	415	56	0.8%
11	Agriculture, Forestry, Fishing and Hunting	1,174	\$31,049	0.05	-104	-1.7%	139	54	73	11	1.0%
99	Unclassified	919	\$42,068	0.61	423	13.1%	116	44	60	12	1.3%
<b>Total - All Industries</b>		<b>1,852,301</b>	<b>\$69,376</b>	<b>1.00</b>	<b>195,735</b>	<b>2.3%</b>	<b>226,078</b>	<b>86,648</b>	<b>116,002</b>	<b>23,428</b>	<b>1.3%</b>

Source: [JobsEQ®](#)

Employment data are derived from the Quarterly Census of Employment and Wages, provided by the Bureau of Labor Statistics and imputed where necessary. Data are updated through 2019Q3 with preliminary estimates updated to 2020Q1. Forecast employment growth uses national projections adapted for regional growth patterns.

# Occupation Snapshot

The largest major occupation group in Dallas County, Texas is Office and Administrative Support Occupations, employing 296,907 workers. The next-largest occupation groups in the region are Sales and Related Occupations (189,283 workers) and Transportation and Material Moving Occupations (173,324). High location quotients (LQs) indicate occupation groups in which a region has high concentrations of employment compared to the national average. The major groups with the largest LQs in the region are Computer and Mathematical Occupations (LQ = 1.44), Office and Administrative Support Occupations (1.27), and Legal Occupations (1.25).

Occupation groups in Dallas County, Texas with the highest average wages per worker are Management Occupations (\$131,900), Legal Occupations (\$116,300), and Architecture and Engineering Occupations (\$98,300). The unemployment rate in the region varied among the major groups from 1.1% among Legal Occupations to 7.2% among Farming, Fishing, and Forestry Occupations.

Over the next 1 year, the fastest growing occupation group in Dallas County, Texas is expected to be Healthcare Support Occupations with a +3.1% year-over-year rate of growth. The strongest forecast by number of jobs over this period is expected for Food Preparation and Serving Related Occupations (+2,399 jobs) and Transportation and Material Moving Occupations (+2,046). Over the same period, the highest separation demand (occupation demand due to retirements and workers moving from one occupation to another) is expected in Office and Administrative Support Occupations (35,293 jobs) and Sales and Related Occupations (25,932).

Dallas County, Texas, 2020Q1<sup>1</sup>

SOC	Occupation	Empl	Avg Ann Wages <sup>2</sup>	Current			5-Year History			1-Year Forecast				
				LQ	Unempl	Unempl Rate	Online Job Ads <sup>3</sup>	Empl Change	Ann %	Total Demand	Exits	Transfers	Empl Growth	Ann % Growth
43-0000	Office and Administrative Support	296,907	\$42,200	1.27	6,289	3.1%	6,564	12,825	0.9%	36,781	14,605	20,688	1,489	0.5%
41-0000	Sales and Related	189,283	\$50,700	1.05	5,660	3.9%	9,396	8,481	0.9%	27,484	9,698	16,234	1,552	0.8%
53-0000	Transportation and Material Moving	173,324	\$41,700	1.14	6,788	4.5%	6,808	32,995	4.3%	24,789	8,215	14,528	2,046	1.2%
35-0000	Food Preparation and Serving Related	138,604	\$25,000	0.87	7,284	5.4%	5,839	15,723	2.4%	27,907	10,327	15,182	2,399	1.7%
13-0000	Business and Financial Operations	123,538	\$82,600	1.22	1,752	2.2%	6,202	19,787	3.6%	14,040	3,531	8,701	1,808	1.5%
11-0000	Management	111,595	\$131,900	0.94	1,216	1.6%	6,164	20,155	4.1%	11,544	2,752	7,023	1,769	1.6%
51-0000	Production	97,403	\$39,600	0.89	3,494	4.1%	2,386	6,576	1.4%	11,912	3,981	7,572	359	0.4%
29-0000	Healthcare Practitioners and Technical	90,322	\$87,500	0.86	849	1.4%	5,015	10,895	2.6%	7,320	2,544	2,945	1,831	2.0%
47-0000	Construction and Extraction	83,747	\$45,600	0.98	3,814	4.7%	930	8,887	2.3%	11,276	2,817	7,062	1,397	1.7%
49-0000	Installation, Maintenance, and Repair	79,596	\$52,200	1.12	1,489	2.5%	2,828	8,815	2.4%	9,066	2,574	5,606	886	1.1%
15-0000	Computer and Mathematical	79,479	\$96,500	1.44	944	1.9%	9,668	14,329	4.1%	7,850	1,410	4,856	1,584	2.0%
25-0000	Educational Instruction and Library	75,703	\$52,700	0.73	1,591	2.6%	1,771	5,533	1.5%	7,798	3,204	3,808	787	1.0%
31-0000	Healthcare Support	60,892	\$30,200	0.75	1,560	3.3%	1,834	8,910	3.2%	10,176	3,907	4,400	1,870	3.1%
37-0000	Building and Grounds Cleaning and Maintenance	55,578	\$30,500	0.88	2,544	4.6%	1,507	1,192	0.4%	8,362	3,319	4,314	728	1.3%
33-0000	Protective Service	39,830	\$45,500	0.99	867	3.2%	824	3,659	1.9%	5,257	2,008	2,804	444	1.1%
39-0000	Personal Care and Service	39,711	\$30,000	0.76	1,192	4.1%	1,007	4,640	2.5%	7,020	2,887	3,514	619	1.6%
17-0000	Architecture and Engineering	34,420	\$98,300	1.10	438	2.0%	1,103	3,519	2.2%	3,206	856	1,978	371	1.1%

## Dallas County, Texas, 2020Q1<sup>1</sup>

SOC	Occupation	Empl	Avg Ann Wages <sup>2</sup>	Current			5-Year History			Total Demand	1-Year Forecast			
				LQ	Unempl	Unempl Rate	Online Job Ads <sup>3</sup>	Empl Change	Ann %		Exits	Transfers	Empl Growth	Ann % Growth
27-0000	Arts, Design, Entertainment, Sports, and Media	31,555	\$58,300	0.93	625	3.0%	783	2,749	1.8%	3,913	1,242	2,303	368	1.2%
23-0000	Legal	19,395	\$116,300	1.25	137	1.1%	391	2,737	3.1%	1,703	530	879	294	1.5%
21-0000	Community and Social Service	17,146	\$54,900	0.54	208	1.5%	1,060	1,528	1.9%	2,289	669	1,294	326	1.9%
19-0000	Life, Physical, and Social Science	12,143	\$77,900	0.77	172	2.0%	699	1,740	3.1%	1,368	259	924	185	1.5%
45-0000	Farming, Fishing, and Forestry	2,130	\$29,600	0.18	225	7.2%	16	59	0.6%	369	87	263	18	0.8%
<b>Total - All Occupations</b>		<b>1,852,301</b>	<b>\$56,700</b>	<b>1.00</b>	<b>49,137</b>	<b>3.5%</b>	<b>72,795</b>	<b>195,735</b>	<b>2.3%</b>	<b>241,728</b>	<b>81,422</b>	<b>136,878</b>	<b>23,428</b>	<b>1.3%</b>

Source: [JobsEQ®](#)

Data as of 2020Q1 unless noted otherwise

Note: Figures may not sum due to rounding.

1. Data based on a four-quarter moving average unless noted otherwise.

2. Wage data are as of 2019 and represent the average for all Covered Employment

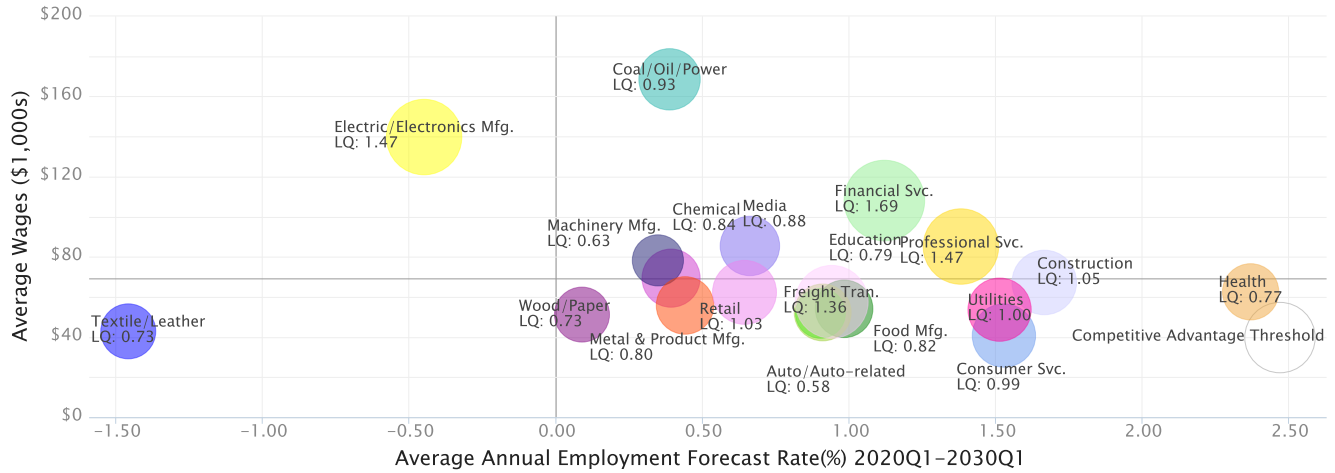
3. Data represent found online ads active within the last thirty days in the selected region; data represents a sampling rather than the complete universe of postings. Ads lacking zip code information but designating a place (city, town, etc.) may be assigned to the zip code with greatest employment in that place for queries in this analytic. Due to alternative county-assignment algorithms, ad counts in this analytic may not match that shown in RTI (nor in the popup window ad list).

Occupation employment data are estimated via industry employment data and the estimated industry/occupation mix. Industry employment data are derived from the Quarterly Census of Employment and Wages, provided by the Bureau of Labor Statistics and currently updated through 2019Q3, imputed where necessary with preliminary estimates updated to 2020Q1. Wages by occupation are as of 2019 provided by the BLS and imputed where necessary. Forecast employment growth uses national projections from the Bureau of Labor Statistics adapted for regional growth patterns.

# Industry Clusters

A cluster is a geographic concentration of interrelated industries or occupations. The industry cluster in Dallas County, Texas with the highest relative concentration is Financial Svc. with a location quotient of 1.69. This cluster employs 123,953 workers in the region with an average wage of \$108,109. Employment in the Financial Svc. cluster is projected to expand in the region about 1.1% per year over the next ten years.

Industry Clusters for Dallas County, Texas as of 2020Q1



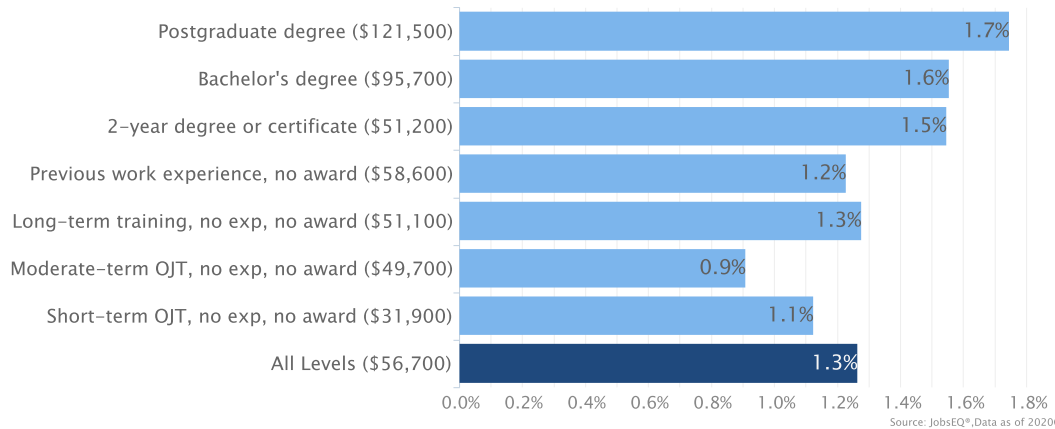
Source: JobsEQ®, Data as of 2020Q1

Location quotient and average wage data are derived from the Quarterly Census of Employment and Wages, provided by the Bureau of Labor Statistics, imputed where necessary, and updated through 2019Q3 with preliminary estimates updated to 2020Q1. Forecast employment growth uses national projections from the Bureau of Labor Statistics adapted for regional growth patterns.

# Education Levels

Expected growth rates for occupations vary by the education and training required. While all employment in Dallas County, Texas is projected to grow 1.3% over the next ten years, occupations typically requiring a postgraduate degree are expected to grow 1.7% per year, those requiring a bachelor's degree are forecast to grow 1.6% per year, and occupations typically needing a 2-year degree or certificate are expected to grow 1.5% per year.

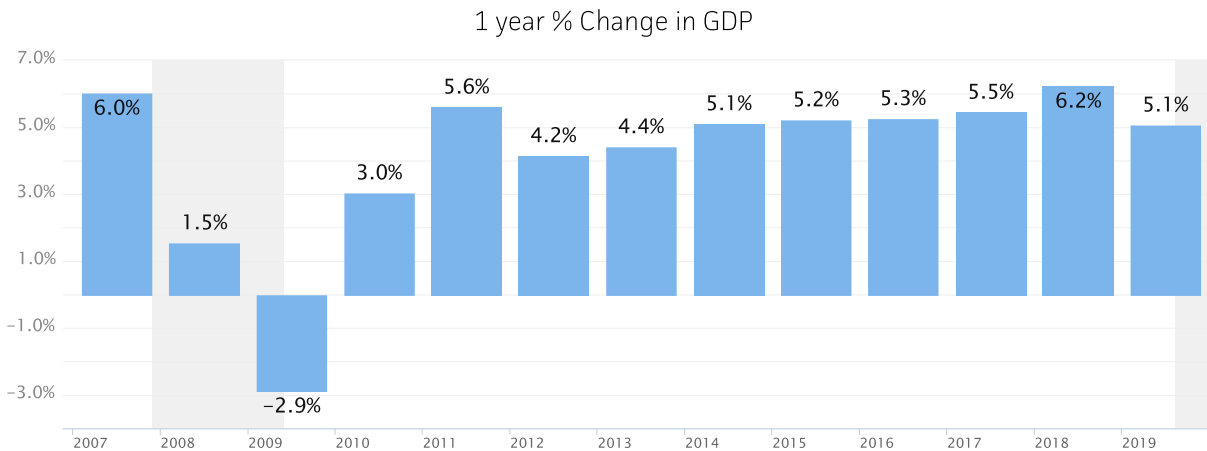
Annual Average Projected Job Growth by Training Required for Dallas County, Texas



Employment by occupation data are estimates as of 2020Q1. Education levels of occupations are based on BLS assignments. Forecast employment growth uses national projections from the Bureau of Labor Statistics adapted for regional growth patterns.

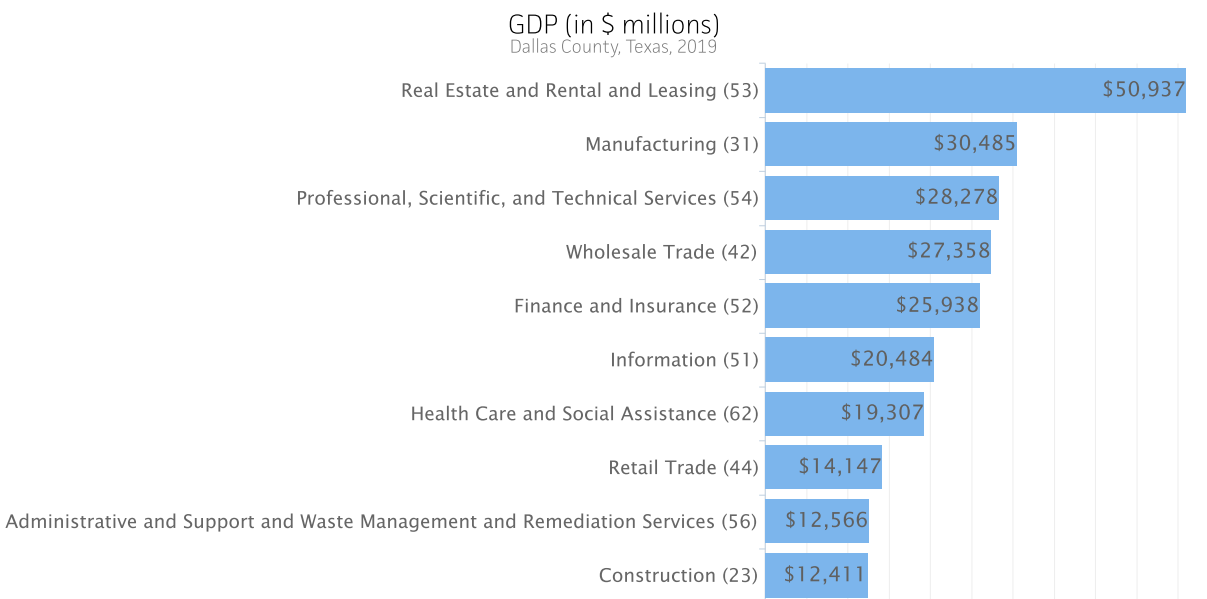
# Gross Domestic Product

Gross Domestic Product (GDP) is the total value of goods and services produced by a region. In 2019, nominal GDP in Dallas County, Texas expanded 5.1%. This follows growth of 6.2% in 2018. As of 2019, total GDP in Dallas County, Texas was \$307,213,620,000.



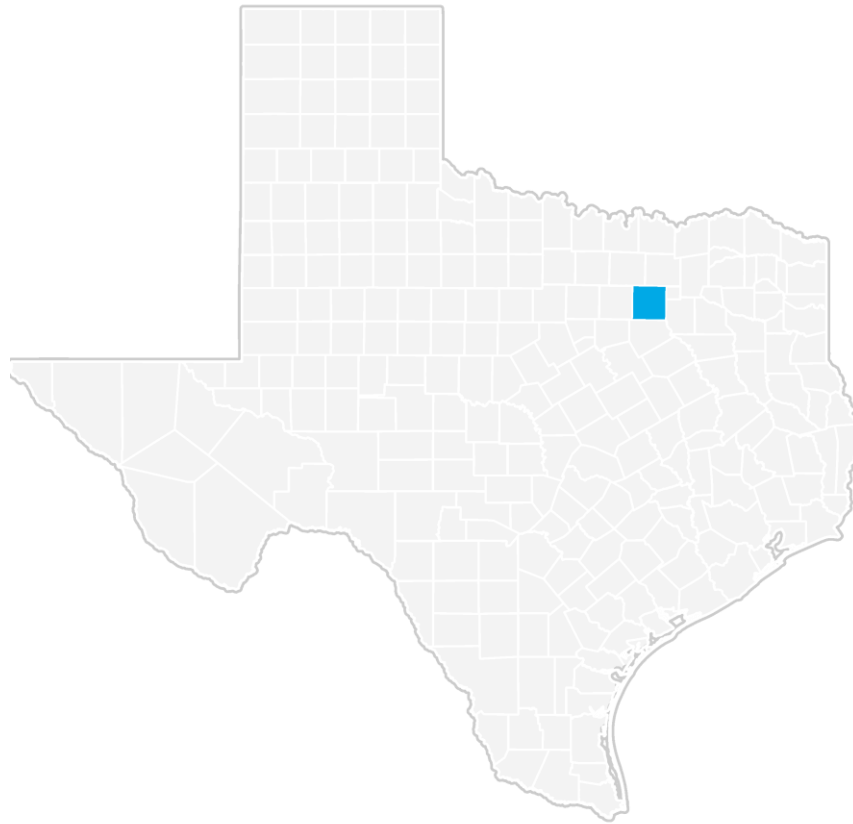
Gross Domestic Product data are provided by the Bureau of Economic Analysis, imputed by Chmura where necessary, updated through 2019.

Of the sectors in Dallas County, Texas, Real Estate and Rental and Leasing contributed the largest portion of GDP in 2019, \$50,937,431,000. The next-largest contributions came from Manufacturing (\$30,485,457,000); Professional, Scientific, and Technical Services (\$28,278,478,000); and Wholesale Trade (\$27,357,854,000).



Gross Domestic Product data are provided by the Bureau of Economic Analysis, imputed by Chmura where necessary, updated through 2019.

# Dallas County, Texas Regional Map



# FAQ

## What is a location quotient?

A location quotient (LQ) is a measurement of concentration in comparison to the nation. An LQ of 1.00 indicates a region has the same concentration of an industry (or occupation) as the nation. An LQ of 2.00 would mean the region has twice the expected employment compared to the nation and an LQ of 0.50 would mean the region has half the expected employment in comparison to the nation.

## What is separation demand?

Separation demand is the number of jobs required due to separations—labor force exits (including retirements) and turnover resulting from workers moving from one occupation into another. Note that separation demand does not include all turnover—it does not include when workers stay in the same occupation but switch employers. The total projected demand for an occupation is the sum of the separation demand and the growth demand (which is the increase or decrease of jobs in an occupation expected due to expansion or contraction of the overall number of jobs in that occupation).

## What is a cluster?

A cluster is a geographic concentration of interrelated industries or occupations. If a regional cluster has a location quotient of 1.25 or greater, the region is considered to possess a competitive advantage in that cluster.

## What is the difference between industry wages and occupation wages?

Industry wages and occupation wages are estimated via separate data sets, often the time periods being reported do not align, and wages are defined slightly differently in the two systems (for example, certain bonuses are included in the industry wages but not the occupation wages). It is therefore common that estimates of the average industry wages and average occupation wages in a region do not match exactly.

## What is NAICS?

The North American Industry Classification System (NAICS) is used to classify business establishments according to the type of economic activity. The NAICS Code comprises six levels, from the “all industry” level to the 6-digit level. The first two digits define the top level category, known as the “sector,” which is the level examined in this report.

## What is SOC?

The Standard Occupational Classification system (SOC) is used to classify workers into occupational categories. All workers are classified into one of over 804 occupations according to their occupational definition. To facilitate classification, occupations are combined to form 22 major groups, 95 minor groups, and 452 occupation groups. Each occupation group includes detailed occupations requiring similar job duties, skills, education, or experience.

### About This Report

This report and all data herein were produced by JobsEQ®, a product of Chmura Economics & Analytics. The information contained herein was obtained from sources we believe to be reliable. However, we cannot guarantee its accuracy and completeness.